

# Prix de Quervain



Dr. Alfred de Quervain,  
Leiter der Grönland-Expedition.  
Source: Heim (1909)

- Named after the Swiss Arctic explorer Alfred de Quervain (1879-1927), this prize is awarded annually since 2009, alternating between polar and high altitude research (laureates)
- Eligible are early career researchers who have completed their MA, PhD or Postdoc work in Switzerland in the 24 months prior to the submission deadline. The next call (high altitude research) will take place in early 2025. To be alerted, please write to [roger.pfister@scnat.ch](mailto:roger.pfister@scnat.ch)
- The awarding of the prize of CHF 5,000 is part of a public symposium at which the prizewinners present their work

# A Life shaped by the Alps and Passion

Université de Strasbourg

PD  
1905



PhD  
1902



Studium  
1898



Uebeschi  
1879

JUNGFRAU  
TOP OF EUROPE

First President  
SKHFJ\*

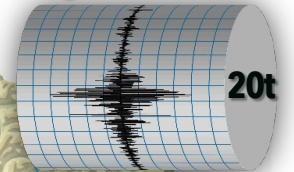


Universität  
Zürich  
UZH  
Prof  
1915-1927



Schweizerischer Erdbebendienst  
Service Sismologique Suisse  
Servizio Sismico Svizzero  
Swiss Seismological Service

Director  
1913-1926  
Degenried/ZH

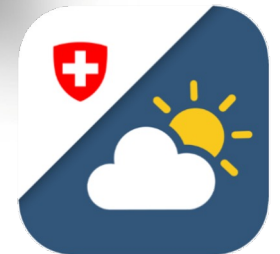


freepik.com



\*SKHFJ: Swiss Commission for the High  
Alpine Research Station Jungfrauoch

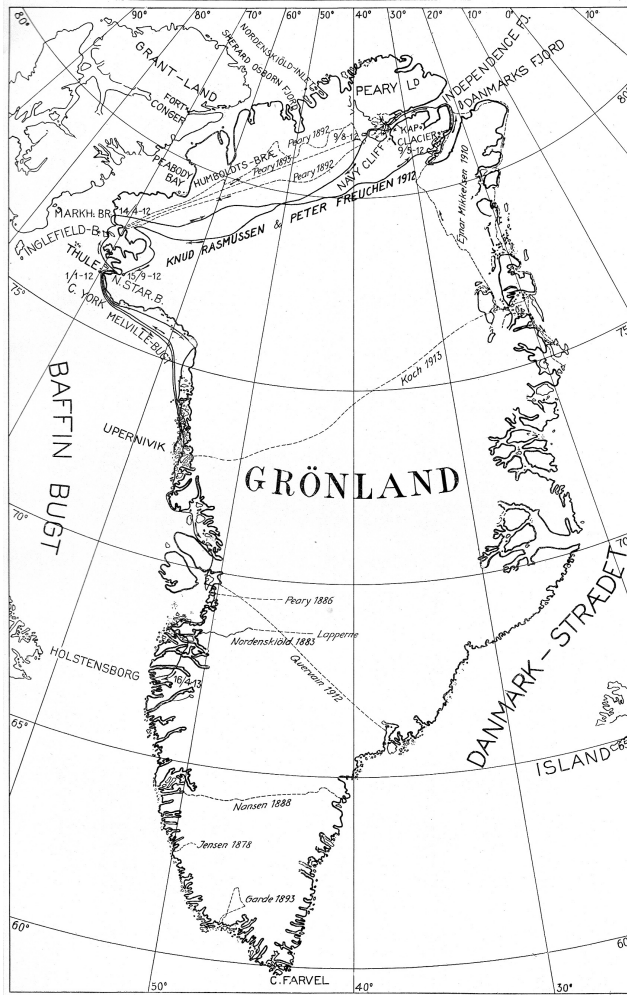
Adjunct  
1906-1927  
Zürich



Prix de Quervain · Award Ceremony · Bern · 03.12.2024



# Across Greenland's Ice Cap



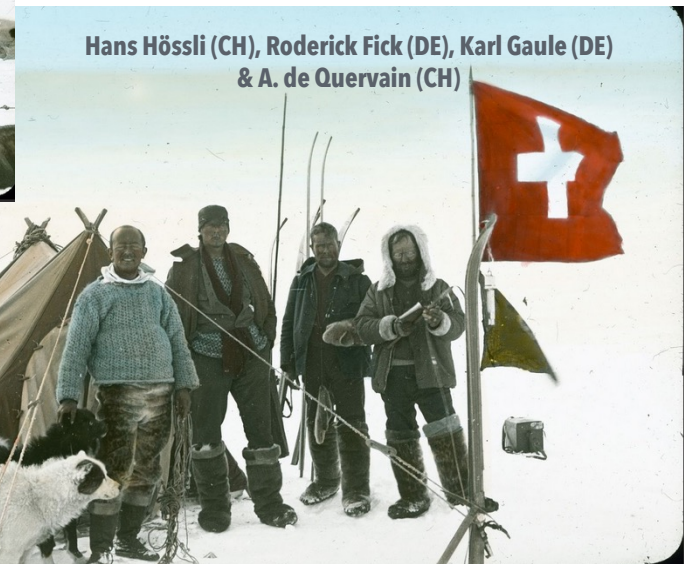
Source: Rasmussen (1920)



Alfred de Quervain

230 km  
August 9 - ? 1909

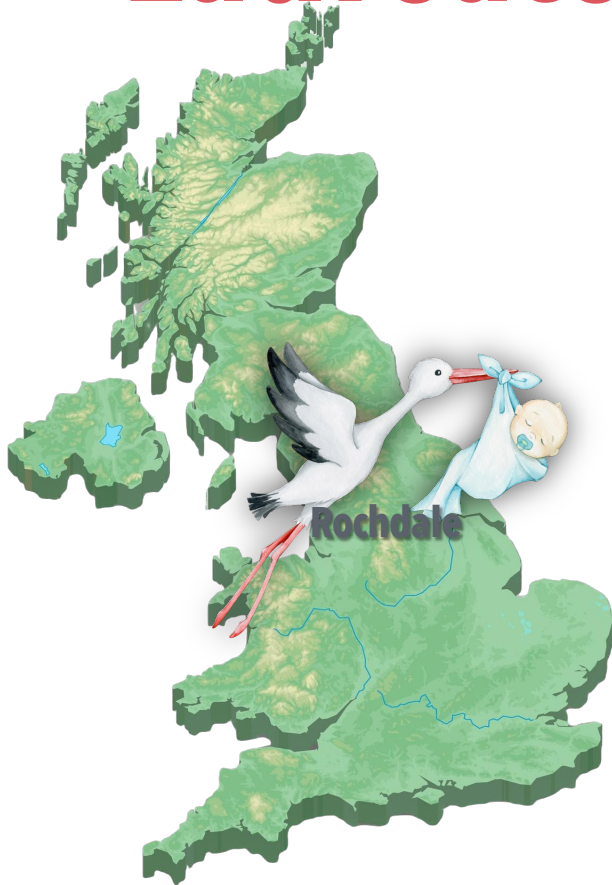
640 km  
June 20<sup>th</sup> - August 1<sup>st</sup>  
1912



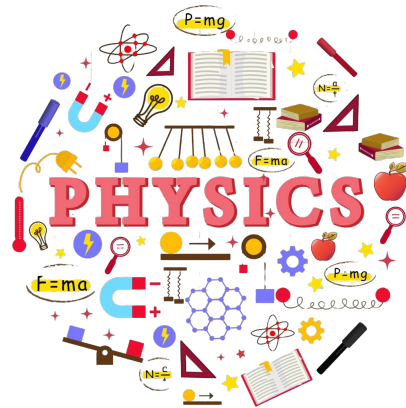
Hans Hössli (CH), Roderick Fick (DE), Karl Gaule (DE)  
& A. de Quervain (CH)

# Laureate 2024: Amy Macfarlane

freepik.com



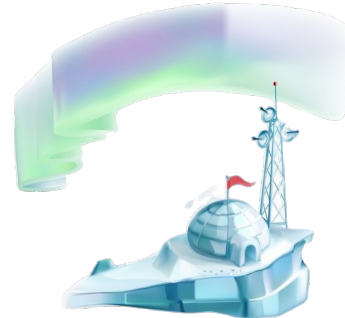
 swiss academies  
of arts and sciences



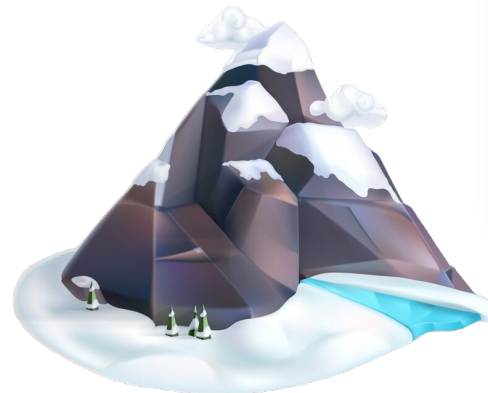
**BSc., 2016**  
**U of Bath, GB**



**2014-2015**  
**WSL/SLF, CH**



**MSc., 2017**  
**UNIS, NO**



**MRes., 2017**  
**U of Sheffield, GB**



**PhD, 2023**  
**WSL/SLF, CH**

Prix de Quervain · Award Ceremony · Bern · 03.12.2024



# MOSAiC Expedition



Three scientists leaving the RV Polarstern to conduct work on ridged sea ice



The scientific research group of the MOSAiC expedition during the summer season (Leg 4). The group is standing on the edge of a typical Arctic melt pond.

# Amy's journey in Science



**Preparing for the MOSAiC Expedition:  
Learning to firefight in Rotterdam (NL)**

**Taking over the snow work between leg 2 to 3 during MOSAiC -  
not knowing that this will be a long journey of 6 months and a  
special time of her life!**



# Amy's journey in Science



**Amy Macfarlane and Stefanie Arndt digging a snowpit to measure the snowpack's physical and chemical properties.**



**One of the scientific stations installed to conduct atmospheric measurements using a tethered balloon. This photo was taken in the quick transition from polar night to polar day.**

# Amy's journey in Science

© Martin Schneebeli



**Amy measuring the surface scattering layer on the melting Arctic sea ice**



**Measuring snow on a remote site of MOSAiC combined with a helicopter flight at polar night**



# Prix de Quervain

## **Influences of snow microstructure on the Arctic sea ice energy budget**

- The critical role of snow on Arctic sea ice
- Cutting-edge techniques such as micro-computed tomography and stable isotope analysis
- Enhancement of our understanding of snow and sea ice dynamics
- Implications for key uncertainties in global climate models
- The first comprehensive dataset documenting the seasonal evolution of snow on sea ice